

PACO20971

Product Information

Size:

50ul

Reactivity:

Human, Mouse, Rat

Source:

Rabbit

Isotype:

IgG

Applications:

ELISA, IHC

Recommended dilutions:

ELISA:1:2000-1:5000, IHC:1:20-1:100

Protein Background:

Involved in several stages of intracellular trafficking. Interacts with membranes containing phosphatidylinositol 3-phosphate (PtdIns(3P)) or phosphatidylinositol 3,4-bisphosphate (PtdIns(3,4)P2). Acts in part as component of the retromer membrane-deforming SNX-BAR subcomplex. The SNX-BAR retromer mediates retrograde transport of cargo proteins from endosomes to the trans-Golgi network (TGN) and is involved in endosome-to-plasma membrane transport for cargo protein recycling. The SNX-BAR subcomplex functions to deform the donor membrane into a tubular profile called endosome-to-TGN transport carrier (ETC) (Probable). Does not have in vitro vesicle-to-membrane remodeling activity. Involved in retrograde transport of lysosomal enzyme receptor IGF2R. May function as link between endosomal transport vesicles and dynactin (Probable). Plays a role in the internalization of EGFR after EGF stimulation (Probable). Involved in EGFR endosomal sorting and degradation; the function involves PIP5K1C isoform 3 and is retromer-independent.

Gene ID:

APLN

Uniprot

Q9ULZ1

Synonyms:

apelin

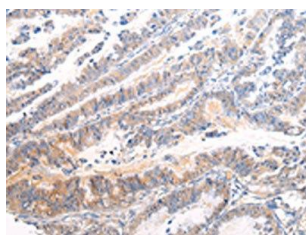
Immunogen:

Synthetic peptide of human APLN.

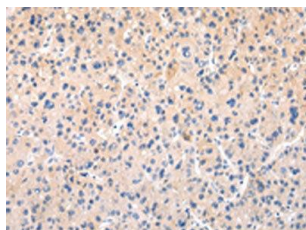
Storage:

-20° C, pH7.4 PBS, 0.05% NaN3, 40% Glycerol

Product Images



The image on the left is immunohistochemistry of paraffin-embedded Human esophagus cancer tissue using PACO20971(APLN Antibody) at dilution 1/20, on the right is treated with synthetic peptide. (Original magnification: x—200).



The image on the left is immunohistochemistry of paraffin-embedded Human liver cancer tissue using PACO20971(APLN Antibody) at dilution 1/20, on the right is treated with synthetic peptide. (Original magnification: x—200).