

Product Information

Size:

100ul(100ug)

Reactivity:

Human

Source:

Rabbit

Isotype:

IgG

Applications:

ELISA, WB, IHC

Recommended dilutions:

ELISA:1:2000-1:10000, WB:1:500-1:2000,
IHC:1:50-1:200

Protein Background:

Cyr61 is a secreted heparin binding protein, encoded by a growth factor-inducible immediate-early gene, that associates with the extracellular matrix and connective tissue. Cyr61 is a member of a distinct family of angiogenic and vasculogenic regulators designated CCN proteins, which includes connective tissue growth factor (CTGF) and the mouse Cyr61 homolog, Fisp12. As an angiogenic inducer, Cyr61 binds to the cell surface receptor Integrin α V/ β 3, where it then stimulates cell adhesion and migration and promotes DNA synthesis of human vascular endothelial cells. Expression of Cyr61 is elevated during vessel growth, wound healing and chondrocyte differentiation. Cyr61 is also detected in a wide variety of tumors as it induces tumor growth and functions as a marker of tumor progression.

Gene ID:

CYR61

Uniprot

O00622

Synonyms:

CYR61; IGFBP10; IGF binding protein 10; IBP 10; CCN family member 1; CCN1

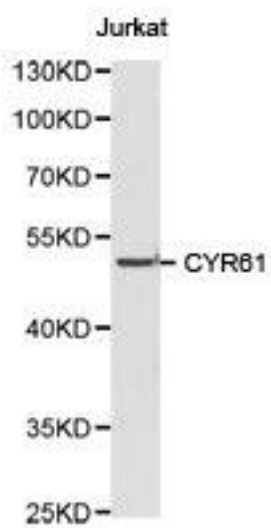
Immunogen:

Recombinant protein of human CYR61.

Storage:

Buffer: PBS with 0.02% sodium azide, 50% glycerol, pH7.3.

Product Images



Western blot analysis of Jurkat cell lysate using CYR61 antibody.