

# KDM1A Antibody



PACO21087

---

## Product Information

**Size:**

100ul(100ug)

**Reactivity:**

Human, Mouse, Rat

**Source:**

Rabbit

**Isotype:**

IgG

**Applications:**

ELISA, WB, IHC

**Recommended dilutions:**

ELISA:1:2000-1:10000, WB:1:500-1:2000,  
IHC:1:50-1:200

**Protein Background:****Gene ID:**

KDM1A

**Uniprot**

O60341

**Synonyms:**

KDM1; AOF2; BHC110; KIAA0601; LSD1 ; KDM1A

**Immunogen:**

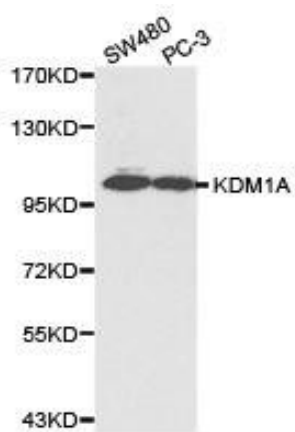
Recombinant protein of human KDM1A.

**Storage:**

Buffer: PBS with 0.02% sodium azide, 50% glycerol, pH7.3.

## Product Images

---



Western blot analysis of SW480 cell and PC-3 cell lysate using KDM1A antibody.