

CDC25A Antibody



PACO21093

Product Information

Size:

100ul(100ug)

Reactivity:

Human, Mouse, Rat

Source:

Rabbit

Isotype:

IgG

Applications:

ELISA, WB, IHC

Recommended dilutions:

ELISA:1:2000-1:10000, WB:1:500-1:2000,
IHC:1:50-1:200

Protein Background:

Gene ID:

CDC25A

Uniprot

P30304

Synonyms:

CDC25A2; CDC25A; cdc25A

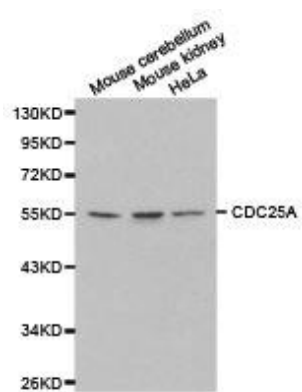
Immunogen:

Recombinant protein of human CDC25A.

Storage:

Buffer: PBS with 0.02% sodium azide, 50% glycerol, pH7.3.

Product Images



Western blot analysis of extracts of various cell lines, using CDC25A antibody.