

# PRSS1 Antibody



PACO21120

---

## Product Information

**Size:**

100ul(100ug)

**Reactivity:**

Human, Mouse, Rat

**Source:**

Rabbit

**Isotype:**

IgG

**Applications:**

ELISA, WB, IHC

**Recommended dilutions:**

ELISA:1:2000-1:10000, WB:1:500-1:2000,  
IHC:1:50-1:200

**Protein Background:**

This gene encodes a trypsinogen, which is a member of the trypsin family of serine proteases. This enzyme is secreted by the pancreas and cleaved to its active form in the small intestine. It is active on peptide linkages involving the carboxyl group of lysine or arginine. Mutations in this gene are associated with hereditary pancreatitis. This gene and several other trypsinogen genes are localized to the T cell receptor beta locus on chromosome 7.

**Gene ID:**

PRSS1

**Uniprot**

P07477

**Synonyms:**

TRP1; TRY1; TRY4; TRYP1

**Immunogen:**

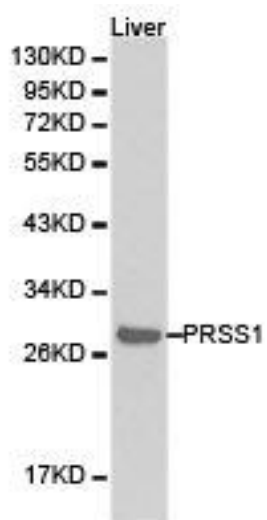
Recombinant protein of human PRSS1.

**Storage:**

Buffer: PBS with 0.02% sodium azide, 50% glycerol, pH7.3.

## Product Images

---



Western blot analysis of Liver cell lysate, using PRSS1 antibody.