

SOD2 Antibody



PACO21127

Product Information

Size:

100ul(100ug)

Reactivity:

Human, Mouse, Rat

Source:

Rabbit

Isotype:

IgG

Applications:

ELISA, WB, IHC

Recommended dilutions:

ELISA:1:2000-1:10000, WB:1:500-1:2000,
IHC:1:50-1:200

Protein Background:**Gene ID:**

SOD2

Uniprot

P04179

Synonyms:

SOD2; IPOB; MNSOD; MVCD6

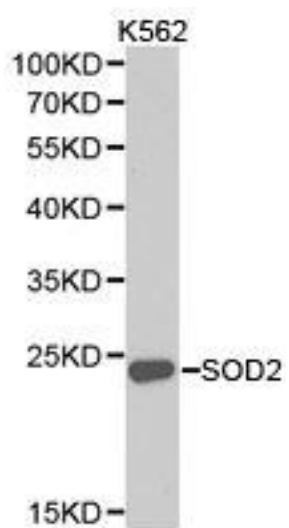
Immunogen:

Recombinant protein of human SOD2.

Storage:

Buffer: PBS with 0.02% sodium azide, 50% glycerol, pH7.3.

Product Images



Western blot analysis of extracts of K562 cell lines, using SOD2 antibody.