

PACO21190

---

## Product Information

**Size:**

100ul(100ug)

**Reactivity:**

Human, Mouse, Rat

**Source:**

Rabbit

**Isotype:**

IgG

**Applications:**

ELISA, WB, IHC

**Recommended dilutions:**

ELISA:1:2000-1:10000, WB:1:500-1:2000,  
IHC:1:50-1:200

**Protein Background:**

This gene encodes a member of the secretoglobin family of small secreted proteins. The encoded protein has been implicated in numerous functions including anti-inflammation, inhibition of phospholipase A2 and the sequestering of hydrophobic ligands. Defects in this gene are associated with a susceptibility to asthma.

**Gene ID:**

SCGB1A1

**Uniprot**

P11684

**Synonyms:**

SCGB1A1; UGB; UP1; CC10; CC16; CCSP; UP-1; CCPBP

**Immunogen:**

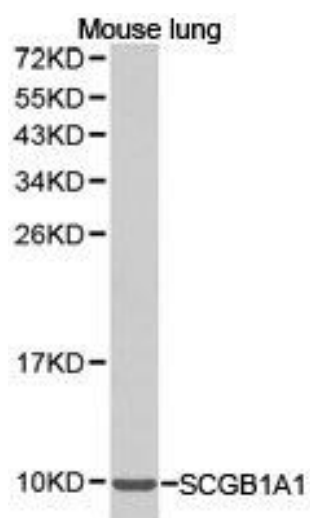
Recombinant protein of human SCGB1A1.

**Storage:**

Buffer: PBS with 0.02% sodium azide, 50% glycerol, pH7.3.

## Product Images

---



Western blot analysis of extracts of mouse lung cell lines, using SCGB1A1 antibody.