

PACO21233

---

## Product Information

**Size:**

100ul(100ug)

**Reactivity:**

Human, Mouse, Rat

**Source:**

Rabbit

**Isotype:**

IgG

**Applications:**

ELISA, WB, IHC

**Recommended dilutions:**

ELISA:1:2000-1:10000, WB:1:500-1:2000,  
IHC:1:50-1:200

**Protein Background:**

The protein encoded by this gene belongs to the dual specificity protein phosphatase family. It was identified as a cyclin-dependent kinase inhibitor, and has been shown to interact with, and dephosphorylate CDK2 kinase, thus prevent the activation of CDK2 kinase. This gene was reported to be deleted, mutated, or overexpressed in several kinds of cancers. Alternatively spliced transcript variants encoding different isoforms have been found for this gene. [provided by RefSeq, Aug 2008].

**Gene ID:**

CDKN3

**Uniprot**

Q16667

**Synonyms:**

CDKN3; CDI1; CIP2; FLJ25787; KAP; KAP1; MGC70625

**Immunogen:**

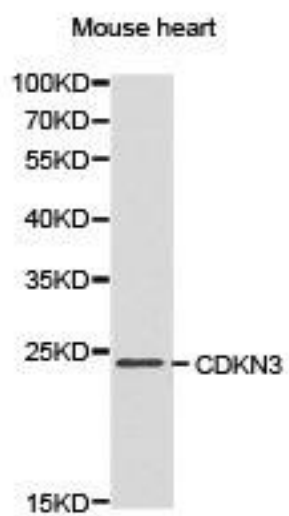
Recombinant protein of human CDKN3.

**Storage:**

Buffer: PBS with 0.02% sodium azide, 50% glycerol, pH7.3.

## Product Images

---



Western blot analysis of extracts of mouse heart cell line, using CDKN3 antibody.