

# PTPRC Antibody



PACO21253

---

## Product Information

**Size:**

100ul(100ug)

**Reactivity:**

Human, Mouse, Rat

**Source:**

Rabbit

**Isotype:**

IgG

**Applications:**

ELISA, WB, IHC

**Recommended dilutions:**

ELISA:1:2000-1:10000, WB:1:500-1:2000,  
IHC:1:50-1:200

**Protein Background:****Gene ID:**

PTPRC

**Uniprot**

P08575

**Synonyms:**

PTPRC; B220; CD45; CD45R; GP180; LCA; LY5; T200

**Immunogen:**

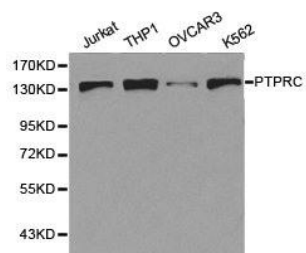
A Synthetic peptide of human PTPRC.

**Storage:**

Buffer: PBS with 0.02% sodium azide, 50% glycerol, pH7.3.

## Product Images

---



Western blot analysis of extracts of various cell lines, using PTPRC antibody.