

## Product Information

**Size:**

100ul(100ug)

**Reactivity:**

Human, Mouse, Rat

**Source:**

Rabbit

**Isotype:**

IgG

**Applications:**

ELISA, WB, IHC

**Recommended dilutions:**

ELISA:1:2000-1:10000, WB:1:500-1:2000,  
IHC:1:50-1:200

**Protein Background:**

Tyk2, a member of the Jak family of protein tyrosine kinases, associates with and is activated by receptors for many cytokines including IL-13, the IL-6 family, IL-10, and interferon-alpha and beta. Following ligand binding, Tyk2 is activated by phosphorylation on Tyr1054 and/or Tyr1055. Tyk2 is required for the tyrosine phosphorylation of Stat3 in the IFN-beta signaling cascade.

**Gene ID:**

TYK2

**Uniprot**

P29597

**Synonyms:**

TYK2; JTK1

**Immunogen:**

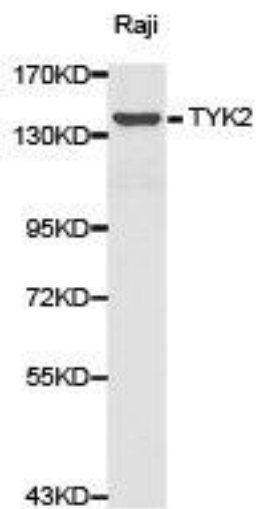
Recombinant protein of human TYK2.

**Storage:**

Buffer: PBS with 0.02% sodium azide, 50% glycerol, pH7.3.

## Product Images

---



Western blot analysis of extracts of Raji cell lines, using TYK2 antibody.