

# NUMBL Antibody



PACO21265

---

## Product Information

**Size:**

100ul(100ug)

**Reactivity:**

Human, Mouse, Rat

**Source:**

Rabbit

**Isotype:**

IgG

**Applications:**

ELISA, WB, IHC

**Recommended dilutions:**

ELISA:1:2000-1:10000, WB:1:500-1:2000,  
IHC:1:50-1:200

**Protein Background:**

Numb-like (Numb or Nbl) binds Notch and is an intracellular modulator of Notch signaling pathway. Numb contains a phosphotyrosine binding (PTB) domain that could bind the Y682 motif present in the cytoplasmic tail of APP. Deduced molecular weight of Numb is 72 kDa.

**Gene ID:**

NUMBL

**Uniprot**

Q9Y6R0

**Synonyms:**

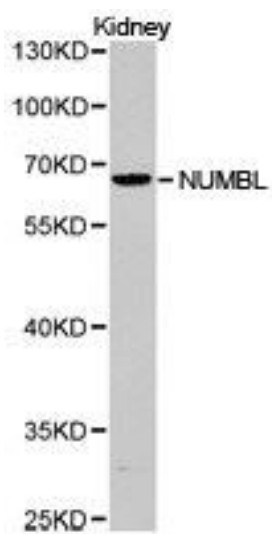
NUMBL; CAG3A; CTG3a; NBL; NUMB-R; NUMBLIKE; NUMBR; TNRC23

**Immunogen:****Storage:**

Buffer: PBS with 0.02% sodium azide, 50% glycerol, pH7.3.

## Product Images

---



Western blot analysis of extracts of kidney cell lines, using NUMBL antibody.