

Product Information

Size:

100ul(100ug)

Reactivity:

Human, Mouse, Rat

Source:

Rabbit

Isotype:

IgG

Applications:

ELISA, WB, IHC

Recommended dilutions:

ELISA:1:2000-1:10000, WB:1:500-1:2000,
IHC:1:50-1:200

Protein Background:

IL-10 is an anti-inflammatory cytokine that is produced by T cells, NK cells and macrophages. IL-10 initiates signal transduction by binding to a cell surface receptor complex consisting of IL-10 RI and IL-10 RII. Binding of IL-10 leads to the activation of Jak1 and Tyk2, which phosphorylates Stat-3. The anti-inflammatory activity of IL-10 is due to its ability to block signaling through other cytokine receptors, notably IFN gamma receptor, by upregulating expression of SOCS-1. In addition, IL-10 promotes T cell tolerance by inhibiting tyrosine phosphorylation of CD28. IL-10 is an important negative regulator of the immune response, which allows for maintenance of pregnancy. In contrast, increased IL-10 levels contribute to persistent Leishmania major infections.

Gene ID:

IL10

Uniprot

P22301

Synonyms:

IL10; CSIF; GVHDS; IL-10; IL10A; TGIF; Interleukin-10; Cytokine synthesis inhibitory factor

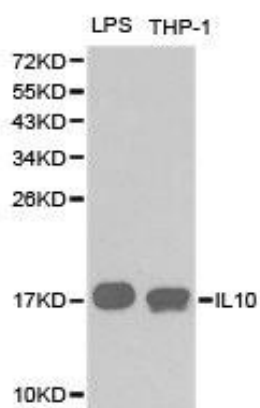
Immunogen:

Recombinant protein of human IL10.

Storage:

Buffer: PBS with 0.02% sodium azide, 50% glycerol, pH7.3.

Product Images



Western blot analysis of extracts of various cell lines, using IL10 antibody.