

### Product Information

**Size:**

100ul(100ug)

**Reactivity:**

Human, Mouse, Rat

**Source:**

Rabbit

**Isotype:**

IgG

**Applications:**

ELISA, WB, IHC

**Recommended dilutions:**

ELISA:1:2000-1:10000, WB:1:500-1:2000,  
IHC:1:50-1:200

**Protein Background:**

EPAC1 and EPAC2 (exchange proteins activated by cyclic AMP) are guanine nucleotide exchange factors (GEFs) that catalyze the exchange of GDP for GTP, activating Rap1 and Rap2 small GTPases. Rap activation by EPAC is cAMP-dependent and mediates cAMP signaling in part through protein kinase A (PKA). EPAC signaling plays a significant role in a number of cellular processes including migration and focal adhesion formation, exocytosis, insulin signaling axon growth and guidance and neurotransmitter release.

**Gene ID:**

RAPGEF3

**Uniprot**

O95398

**Synonyms:**

RAPGEF3; CAMP-GEFI; EPAC; EPAC1; HSU79275; MGC21410; bcm910;

**Immunogen:**

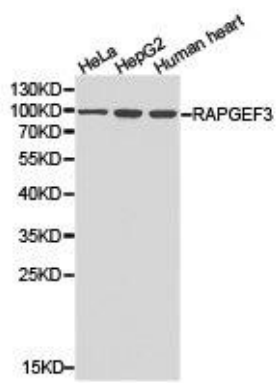
Recombinant protein of human RAPGEF3.

**Storage:**

Buffer: PBS with 0.02% sodium azide, 50% glycerol, pH7.3.

## Product Images

---



Western blot analysis of extracts of various cell lines, using RAPGEF3 antibody.