

Product Information

Size:

100ul

Reactivity:

Human, Mouse, Rat

Source:

Rabbit

Isotype:

IgG

Applications:

ELISA, WB, IHC

Recommended dilutions:

ELISA:1:2000-1:10000, WB:1:500-1:2000,
IHC:1:50-1:200

Protein Background:

The protein encoded by this gene catalyzes the formation of inositol 1,4,5-trisphosphate and diacylglycerol from phosphatidylinositol 4,5-bisphosphate. This reaction uses calcium as a cofactor and plays an important role in the intracellular transduction of receptor-mediated tyrosine kinase activators. For example, when activated by SRC, the encoded protein causes the Ras guanine nucleotide exchange factor RasGRP1 to translocate to the Golgi, where it activates Ras. Also, this protein has been shown to be a major substrate for heparin-binding growth factor 1 (acid, c fibroblast growth factor)-activated tyrosine kinase. Two transcript variants encoding different isoforms have been found for this gene.

Gene ID:

PLCG1

Uniprot

P19174

Synonyms:

1-phosphatidylinositol-4,5-bisphosphate phosphodiesterase gamma 1, EC 3.1.4.11, PLC-148, PLC-II, PLC-gamma1, PLC1, PLCG-1, Phospholipase C-gamma-1

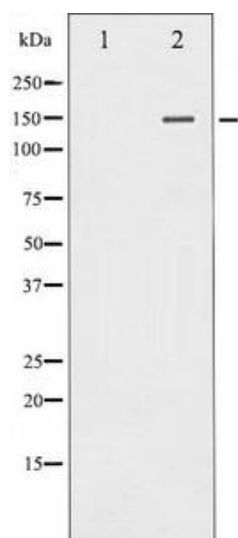
Immunogen:

A Synthesized peptide derived from human PLCG1.

Storage:

Rabbit IgG in phosphate buffered saline , pH 7.4, 150mM NaCl, 0.02% sodium azide and 50% glycerol. Store at -20 ° C. Stable for 12 months from date of receipt

Product Images



Western blot analysis of PLCG1 expression in EGF treated 293 whole cell lysates, The lane on the left is treated with the antigen-specific peptide.