

PACO21310

---

## Product Information

**Size:**

100ul

**Reactivity:**

Human, Mouse, Rat

**Source:**

Rabbit

**Isotype:**

IgG

**Applications:**

ELISA, WB, IHC

**Recommended dilutions:**

ELISA:1:2000-1:10000, WB:1:500-1:2000,  
IHC:1:50-1:200

**Protein Background:**

This gene is a member of the Ets family of transcription factors and of the ternary complex factor (TCF) subfamily. Proteins of the TCF subfamily form a ternary complex by binding to the the serum response factor and the serum reponse element in the promoter of the c-fos proto-oncogene.

**Gene ID:**

ELK1

**Uniprot**

P19419

**Synonyms:**

ELK1, ETS-domain protein ELK-1, ETS-domain protein Elk-1

**Immunogen:**

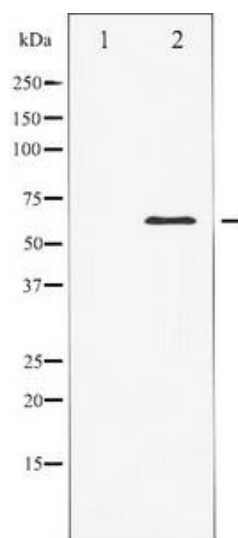
A Synthesized peptide derived from human Elk1.

**Storage:**

Rabbit IgG in phosphate buffered saline , pH 7.4, 150mM NaCl, 0.02% sodium azide and 50% glycerol.

## Product Images

---



Western blot analysis of Elk1 expression in heatshock treated HeLa whole cell lysates, The lane on the left is treated with the antigen-specific peptide.