

PACO21314

Product Information

Size:

100ul

Reactivity:

Human, Mouse, Rat

Source:

Rabbit

Isotype:

IgG

Applications:

ELISA, WB, IHC

Recommended dilutions:

ELISA:1:2000-1:10000, WB:1:500-1:2000,
IHC:1:50-1:200

Protein Background:

The protein encoded by this gene belongs to the family of P-type cation transport ATPases, and to the subfamily of Na⁺/K⁺ -ATPases. Na⁺/K⁺ -ATPase is an integral membrane protein responsible for establishing and maintaining the electrochemical gradients of Na and K ions across the plasma membrane.

Gene ID:

ATP1A1

Uniprot

P05023

Synonyms:

A1A1, AT1A1, ATP1A1, Na⁺/K⁺ transporting, alpha 1 polypeptide, EC 3.6.3.9, Hypothetical protein MGC38419, Na⁺/K⁺ ATPase 1, Na, K-ATPase 1, Sodium pump 1, Sodium/potassium-transporting ATPase alpha-1 chain precursor

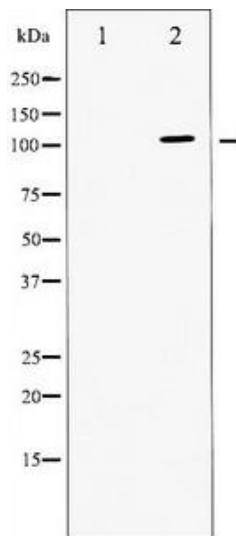
Immunogen:

A Synthesized peptide derived from human ATPase.

Storage:

Rabbit IgG in phosphate buffered saline , pH 7.4, 150mM NaCl, 0.02% sodium azide and 50% glycerol.

Product Images



Western blot analysis of ATPase expression in PMA treated 293 whole cell lysates, The lane on the left is treated with the antigen-specific peptide.