

Cleaved-PARP1 (A214) Antibody



PACO21319

Product Information

Size:

100ul

Reactivity:

Human, Mouse

Source:

Rabbit

Isotype:

IgG

Applications:

ELISA, WB

Recommended dilutions:

ELISA:1:2000-1:10000, WB:1:500-1:2000

Protein Background:

Involved in the base excision repair (BER) pathway, by catalyzing the poly(ADP-ribose)ylation of a limited number of acceptor proteins involved in chromatin architecture and in DNA metabolism. This modification follows DNA damages and appears as an obligatory step in a detection/signaling pathway leading to the reparation of DNA strand breaks. .

Gene ID:

PARP1

Uniprot

P09874

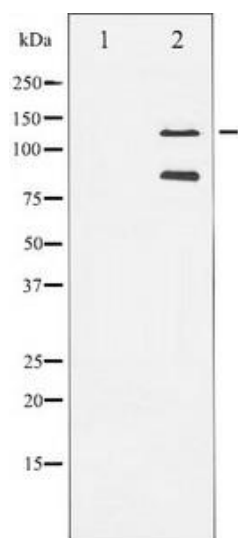
Synonyms:

ADP-ribosyltransferase 1; ADPRT; ADPRT1; pADPRT-1; PARP; PARP-1; poly (ADP-ribose) pol; poly [ADP-ribose] polymerase 1; poly[ADP-ribose] synthetase 1; PPOL

Immunogen:**Storage:**

Rabbit IgG in phosphate buffered saline , pH 7.4, 150mM NaCl, 0.02% sodium azide and 50% glycerol. Store at -20 °C. Stable for 14 months from date of receipt

Product Images



Western blot analysis of extracts from A549 cells, The lane on the left is treated with the antigen-specific peptide.