

Product Information

Size:

100ul

Reactivity:

Human, Mouse, Rat

Source:

Rabbit

Isotype:

IgG

Applications:

ELISA, WB, IHC

Recommended dilutions:

ELISA:1:2000-1:10000, WB:1:500-1:2000,
IHC:1:50-1:200

Protein Background:

This gene belongs to the forkhead family of transcription factors which are characterized by a distinct forkhead domain. The specific function of this gene has not yet been determined; however, it may play a role in myogenic growth and differentiation. .

Gene ID:

FOXO1

Uniprot

Q12778

Synonyms:

FOXO1A, FOXO1, Forkhead box protein O1A, Forkhead in rhabdomyosarcoma

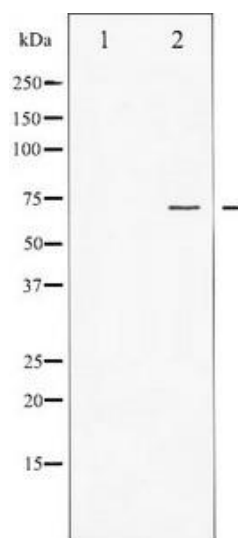
Immunogen:

A Synthesized peptide derived from human FOXO1A.

Storage:

Rabbit IgG in phosphate buffered saline , pH 7.4, 150mM NaCl, 0.02% sodium azide and 50% glycerol.

Product Images



Western blot analysis of FOXO1A expression in Serum treated HeLa whole cell lysates, The lane on the left is treated with the antigen-specific peptide.