

Product Information

Size:

100ul

Reactivity:

Human, Mouse, Rat

Source:

Rabbit

Isotype:

IgG

Applications:

ELISA, WB, IHC

Recommended dilutions:

ELISA:1:2000-1:10000, WB:1:500-1:2000,
IHC:1:50-1:200

Protein Background:

GSK3A a proline-directed protein kinase of the GSK family. Implicated in the control of several regulatory proteins including glycogen synthase, Myb, and c-Jun. GSK3 and GSK3 have similar functions. GSK3 phosphorylates tau, the principal component of neurofibrillary tangles in Alzheimer disease and is required for maximal production of amyloid plaque peptides by secretase. .

Gene ID:

GSK3A

Uniprot

P49840

Synonyms:

DKFZp686D0638; glycogen synthase kinase 3 alpha; Glycogen synthase kinase-3 alpha; GSK-3 alpha; GSK3A

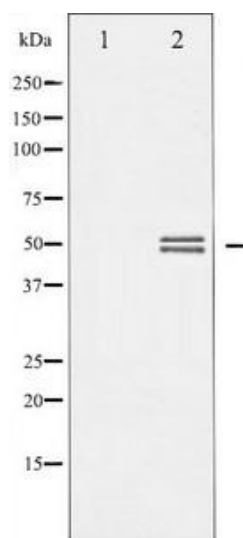
Immunogen:

A Synthesized peptide derived from human GSK3 alpha/beta.

Storage:

Rabbit IgG in phosphate buffered saline , pH 7.4, 150mM NaCl, 0.02% sodium azide and 50% glycerol.

Product Images



Western blot analysis of GSK3 alpha/beta expression in TNF- α treated 293 whole cell lysates, The lane on the left is treated with the antigen-specific peptide.