

PACO21323

---

## Product Information

**Size:**

100ul

**Reactivity:**

Human, Mouse

**Source:**

Rabbit

**Isotype:**

IgG

**Applications:**

ELISA, WB, IHC

**Recommended dilutions:**

ELISA:1:2000-1:10000, WB:1:500-1:2000,  
IHC:1:50-1:200

**Protein Background:**

This protein has many roles during postimplantation development. It is involved in embryonic mesoderm formation and its maintenance and may also be involved in chondrogenesis and in epithelial-mesenchymal inductive interactions. .

**Gene ID:**

SNAI1

**Uniprot**

O95863

**Synonyms:**

SNAH, SNAI, Sna, Snail, zinc finger protein SNAI1

**Immunogen:**

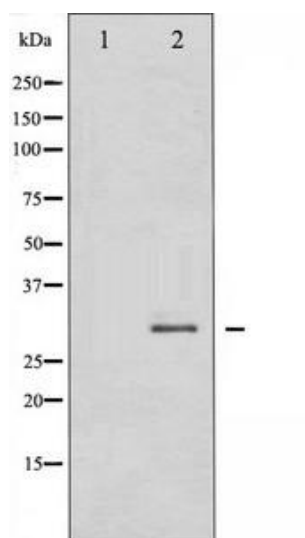
A Synthesized peptide derived from human SNAI1.

**Storage:**

Rabbit IgG in phosphate buffered saline , pH 7.4, 150mM NaCl, 0.02% sodium azide and 50% glycerol.

## Product Images

---



Western blot analysis of SNAI1 expression in HT29 whole cell lysates, The lane on the left is treated with the antigen-specific peptide.