

PACO21324

---

## Product Information

**Size:**

100ul

**Reactivity:**

Human, Mouse

**Source:**

Rabbit

**Isotype:**

IgG

**Applications:**

ELISA, WB

**Recommended dilutions:**

ELISA:1:2000-1:10000, WB:1:500-1:2000

**Protein Background:**

IkB-beta a protein of the NF-kappa-B inhibitor family. Inhibits NF-kappa-B by complexing with and trapping it in the cytoplasm. However, the unphosphorylated form resynthesized after cell stimulation is able to bind NF-kappa-B allowing its transport to the nucleus and protecting it to further IKBA- dependent inactivation. .

**Gene ID:**

NFKBIB

**Uniprot**

Q15653

**Synonyms:**

I-kappa-B-beta; IkappaBbeta; IkB-B; IkB-beta; IKBB; NF-kappa-B inhibitor beta; NF-kappa-BIB; NFKBIB; nuclear factor of kappa; light polypeptide gene enhancer in B-cells inhibitor, beta; Thyroid receptor-interacting protein 9; TR-interacting protein 9; TRIP

**Immunogen:**

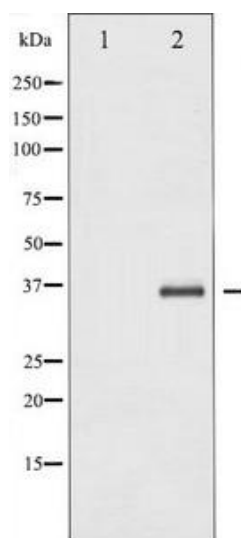
A Synthesized peptide derived from human IkappaB-beta.

**Storage:**

Rabbit IgG in phosphate buffered saline , pH 7.4, 150mM NaCl, 0.02% sodium azide and 50% glycerol

## Product Images

---



Western blot analysis of IκappaB-beta expression in TNF treated NIH-3T3 whole cell lysates, The lane on the left is treated with the antigen-specific peptide.