

### Product Information

**Size:**

100ul

**Reactivity:**

Human

**Source:**

Rabbit

**Isotype:**

IgG

**Applications:**

ELISA, WB, IHC

**Recommended dilutions:**

ELISA:1:2000-1:10000, WB:1:500-1:2000,  
IHC:1:50-1:200

**Protein Background:**

GLUT3 an integral membrane facilitative glucose transporter. One of 13 members of the human equilibrative glucose transport protein family. Its surface expression is induced by insulin. It is restricted in humans to brain, testis (in the spermatozoa), and skeletal muscle, mostly in triads of slow-twitch fibres. Detected only in the brain of mouse and rat. .

**Gene ID:**

SLC2A3

**Uniprot**

P11169

**Synonyms:**

FLJ90380; Glucose transporter type 3, brain; GLUT-3; GLUT3; GTR3; SLC2A3; solute carrier family 2 (facilitated glucose transporter), member 3; Solute carrier family 2, facilitated glucose transporter member 3

**Immunogen:**

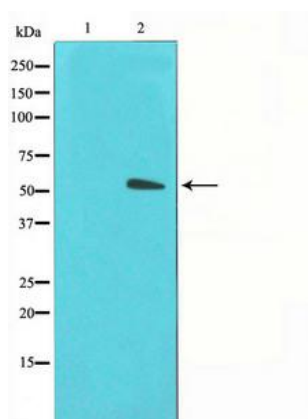
A Synthesized peptide derived from human GLUT3.

**Storage:**

Rabbit IgG in phosphate buffered saline , pH 7.4, 150mM NaCl, 0.02% sodium azide and 50% glycerol.

## Product Images

---



Western blot analysis on LOVO cell lysate using GLUT3 Antibody.