

Product Information

Size:

100ul

Reactivity:

Human, Mouse, Rat

Source:

Rabbit

Isotype:

IgG

Applications:

ELISA, WB, IHC, IF/ICC

Recommended dilutions:

ELISA:1:2000-1:10000, WB:1:500-1:2000,
IHC:1:50-1:200, IF: ICC:1:100-1:500

Protein Background:

CHOP a transcriptional-regulatory protein of the bZIP family. Inhibits the DNA-binding activity of C/EBP and LAP by forming heterodimers that cannot bind DNA. May play an important role in melanoma progression. CK2-mediated phosphorylation inhibits its transcriptional activity. Up-regulates IL-6 transcription by trapping negative regulating NF-IL6 isoform. .

Gene ID:

DDIT3

Uniprot

P35638

Synonyms:

C/EBP-homologous protein, DDIT3, DNA-damage inducible transcript 3, GADD153, Growth arrest and DNA-damage-inducible protein GADD153 Molecular weight: 19174.8 chop

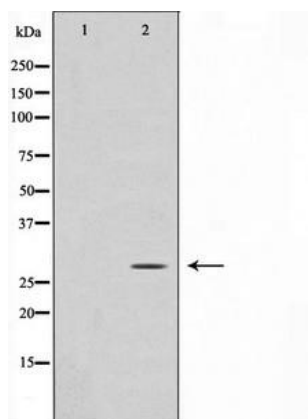
Immunogen:

A Synthesized peptide derived from human GADD153.

Storage:

Rabbit IgG in phosphate buffered saline , pH 7.4, 150mM NaCl, 0.02% sodium azide and 50% glycerol.

Product Images



Western blot analysis on Jurkat cell lysate using GADD153 Antibody.