

CLDN5 Antibody



PACO21328

Product Information

Size:

100ul

Reactivity:

Human, Mouse, Rat

Source:

Rabbit

Isotype:

IgG

Applications:

ELISA, WB, IHC

Recommended dilutions:

ELISA:1:2000-1:10000, WB:1:500-1:2000,
IHC:1:50-1:200

Protein Background:

claudin 5 Plays a major role in tight junction-specific obliteration of the intercellular space. Belongs to the claudin family. Directly interacts with TJP1/ZO-1, TJP2/ZO-2 and TJP3/ZO- 3. Interacts with MPDZ. .

Gene ID:

CLDN5

Uniprot

O00501

Synonyms:

androgen withdrawal and apoptosis induced protein RVP1-like; AWAL; BEC1; claudin 5; Claudin-5; CLD5; CLDN5; CPETRL1; TMDVCF; TMVCF; Transmembrane protein deleted in VCFS; transmembrane protein deleted in velocardiofacial syndrome

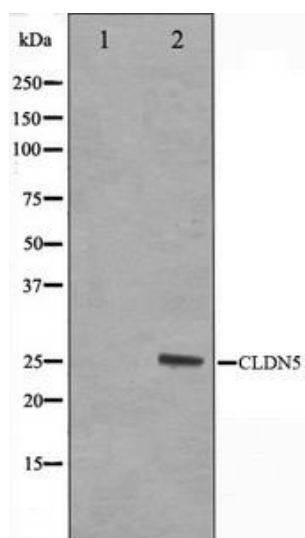
Immunogen:

A Synthesized peptide derived from human Claudin 5.

Storage:

Rabbit IgG in phosphate buffered saline , pH 7.4, 150mM NaCl, 0.02% sodium azide and 50% glycerol.

Product Images



Western blot analysis on A549 cell lysate using Claudin 5 Antibody.