

MET (Ab-1234/1235) Antibody



PACO21340

Product Information

Size:

100ul

Reactivity:

Human, Mouse, Rat

Source:

Rabbit

Isotype:

IgG

Applications:

ELISA, WB

Recommended dilutions:

ELISA:1:2000-1:10000, WB:1:500-1:1000

Protein Background:

Receptor for hepatocyte growth factor and scatter factor. Has a tyrosine-protein kinase activity. Functions in cell proliferation, scattering, morphogenesis and survival.

Gene ID:

MET

Uniprot

P08581

Synonyms:

HGF receptor, HGF-SF receptor, Met proto-oncogene tyrosine kinase, c-met, kinase Met

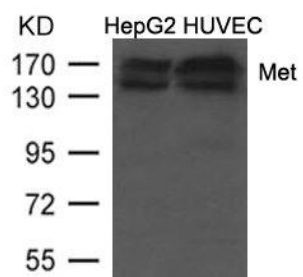
Immunogen:

Peptide sequence around aa.1232-1237(K-E-Y-Y-S-V) derived from Human Met.

Storage:

Purified Rabbit polyclonal in PBS(pH 7.4) containing with 0.02% sodium azide and 50% glycerol.

Product Images



Western blot analysis of extracts from HepG2 and HUVEC cells using Met (Ab-1234/1235) Antibody.