

PACO21341

---

## Product Information

**Size:**

100ul

**Reactivity:**

Human, Mouse, Rat

**Source:**

Rabbit

**Isotype:**

IgG

**Applications:**

ELISA, WB

**Recommended dilutions:**

ELISA:1:2000-1:10000, WB:1:500-1:1000

**Protein Background:****Gene ID:**

ACTB

**Uniprot**

P60709

**Synonyms:**

BRWS1, PS1TP5BP1,

**Immunogen:**

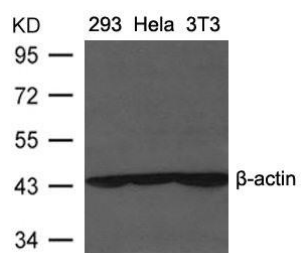
Peptide sequence around aa.6-10(A-A-L-V-V)derived from Human beta-actin.

**Storage:**

Purified Rabbit polyclonal in PBS(pH 7.4) containing with 0.02% sodium azide and 50% glycerol.

## Product Images

---



Western blot analysis of extracts from 293, HeLa and 3T3 cells using beta-actin Antibody.