

PACO21342

Product Information

Size:

100ul

Reactivity:

Human

Source:

Rabbit

Isotype:

IgG

Applications:

ELISA, WB

Recommended dilutions:

ELISA:1:2000-1:10000, WB:1:500-1:1000

Protein Background:

Gene ID:

CAV2

Uniprot

P51636

Synonyms:

CAV,

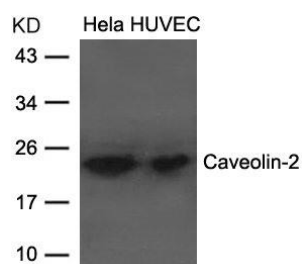
Immunogen:

Antibodies were produced by immunizing rabbits with Synthetic peptide and KLH conjugates. Antibodies were purified by affinity-chromatography using epitope-specific peptide.

Storage:

Purified Rabbit polyclonal in PBS(pH 7.4) containing with 0.02% sodium azide and 50% glycerol.

Product Images



Western blot analysis of extracts from HeLa and HUVEC cells using Caveolin-2 Antibody.