

SMAD1 (Ab-206) Antibody



PACO21343

Product Information

Size:

100ul

Protein Background:**Reactivity:**

Human, Mouse, Rat

Gene ID:

SMAD1

Source:

Rabbit

Uniprot

Q15797

Isotype:

IgG

Synonyms:

BSP1, JV41, MADH1, MADR1,

Applications:

ELISA, WB

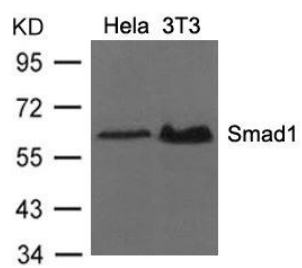
Immunogen:**Recommended dilutions:**

ELISA:1:2000-1:10000, WB:1:500-1:1000

Storage:

Purified Rabbit polyclonal in PBS(pH 7.4) containing with 0.02% sodium azide and 50% glycerol.

Product Images



Western blot analysis of extracts from HeLa and 3T3 cells using Smad1 (Ab-206) Antibody.