

JUN (Ab-63) Antibody



PACO21348

Product Information

Size:

100ul

Reactivity:

Human, Mouse, Rat

Source:

Rabbit

Isotype:**Protein Background:****Gene ID:**

JUN

Uniprot

P05412

Synonyms:

AH119; AP1; Jun A; c-Jun; p39

Applications:

ELISA, WB

Immunogen:

Peptide sequence around aa. 61~65 (L-T-S-P-D) derived from Human c-Jun.

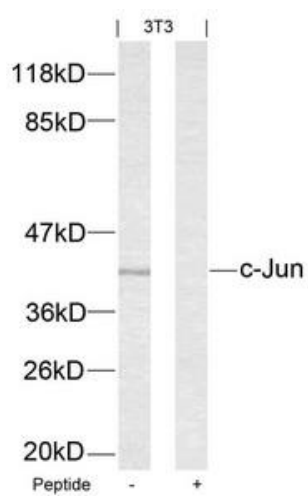
Recommended dilutions:

ELISA:1:2000-1:10000, WB:1:500-1:1000

Storage:

Supplied at 1.0mg/mL in phosphate buffered saline (without Mg²⁺ and Ca²⁺), pH 7.4, 150mM NaCl, 0.02% sodium azide and 50% glycerol.

Product Images



Western blot analysis of extracts from 3T3 cells using c-Jun(Ab).