

# MEF2A (Ab-319) Antibody



PACO21353

---

## Product Information

**Size:**

100ul

**Reactivity:**

Human, Mouse, Rat

**Source:**

Rabbit

**Isotype:****Protein Background:****Gene ID:**

MEF2A

**Uniprot**

Q02078

**Synonyms:**

MEF2; Serum response factor-like protein 1;

**Applications:**

ELISA, IHC

**Immunogen:**

Peptide sequence around aa.317~321 (V-T-T-P-S) derived from Human MEF2A.

**Recommended dilutions:**

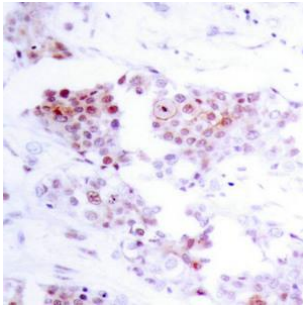
ELISA:1:2000-1:10000, IHC:1:50-1:100

**Storage:**

Supplied at 1.0mg/mL in phosphate buffered saline (without Mg<sup>2+</sup> and Ca<sup>2+</sup>), pH 7.4, 150mM NaCl, 0.02% sodium azide and 50% glycerol.

## Product Images

---



Immunohistochemical analysis of paraffin-embedded human breast carcinoma tissue using MEF2A(Ab-319) Antibody.