

GATA1 (Ab-310) Antibody



PACO21354

Product Information

Size:

100ul

Reactivity:

Human, Mouse, Rat

Source:

Rabbit

Isotype:

IgG

Applications:

ELISA, WB

Recommended dilutions:

ELISA:1:2000-1:10000, WB:1:500-1:1000

Protein Background:**Gene ID:**

GATA1

Uniprot

P15976

Synonyms:

GAT1; GATA1; GF-1; NF-E1;

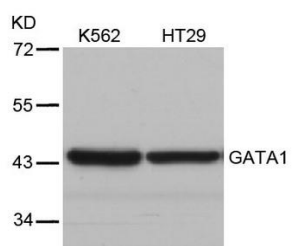
Immunogen:

Peptide sequence around aa.308~312 (K-A-S-G-K) derived from Human GATA1.

Storage:

Supplied at 1.0mg/mL in phosphate buffered saline (without Mg²⁺ and Ca²⁺), pH 7.4, 150mM NaCl, 0.02% sodium azide and 50% glycerol.

Product Images



Western blot analysis of extracts from K562 and HT29 cells using GATA1(Ab-310) Antibody.