

PACO21362

Product Information

Size:

100ul

Reactivity:

Human

Source:

Rabbit

Isotype:

IgG

Applications:

ELISA, WB

Recommended dilutions:

ELISA:1:2000-1:10000, WB:1:500-1:1000

Protein Background:

Acts as a tumor suppressor in many tumor types; induces growth arrest or apoptosis depending on the physiological circumstances and cell type. Involved in cell cycle regulation as a trans-activator that acts to negatively regulate cell division by controlling a set of genes required for this process. One of the activated genes is an inhibitor of cyclin-dependent kinases. Apoptosis induction seems to be mediated either by stimulation of BAX and FAS antigen expression, or by repression of Bcl-2 expression. Implicated in Notch signaling cross-over. Patrick, G. N. et al. (1998) J Biol Chem. 273: 24057-24064. Mayo LD, et al. (2005) J Biol Chem. 280(28):25953-25959.

Gene ID:

TP53

Uniprot

P04637

Synonyms:

Tumor suppressor p53; Phosphoprotein p53; Antigen NY-CO-13

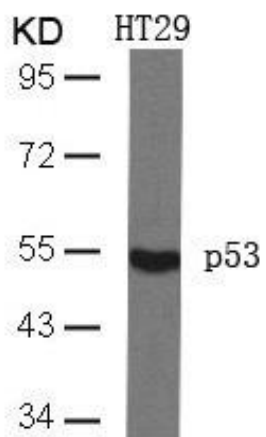
Immunogen:

Peptide sequence around aa. 44~48 (M-L-S-P-D) derived from Human p53.

Storage:

Supplied at 1.0mg/mL in phosphate buffered saline (without Mg²⁺ and Ca²⁺), pH 7.4, 150mM NaCl, 0.02% sodium azide and 50% glycerol.

Product Images



Western blot analysis of extracts from HT29 cells using p53(Ab-46) Antibody.