

# CAV1 (Ab-14) Antibody



PACO21377

---

## Product Information

**Size:**

100ul

**Reactivity:**

Human, Mouse, Rat

**Source:**

Rabbit

**Isotype:**

IgG

**Applications:**

ELISA, WB

**Recommended dilutions:**

ELISA:1:2000-1:10000, WB:1:500-1:1000

**Protein Background:**

The scaffolding protein encoded by Caveolin-1 is the main component of the caveolae plasma membranes found in most cell types. The protein links integrin subunits to the tyrosine kinase FYN, an initiating step in coupling integrins to the Ras-ERK pathway and promoting cell cycle progression. The gene is a tumor suppressor gene candidate and a negative regulator of the Ras-p42/44 MAP kinase cascade. CAV1 and CAV2 are located next to each other on chromosome 7 and express colocalizing proteins that form a stable hetero-oligomeric complex. By using alternative initiation codons in the same reading frame, two isoforms (a and beta) are encoded by a single transcript from this gene. Labrecque L, et al. (2004) J Biol Chem. 279(50): 52132-52140. Labrecque L, et al. (2003) Mol Biol Cell. 14(1): 334-347.

**Gene ID:**

CAV1

**Uniprot**

Q03135

**Synonyms:**

CAV; CAV1;

**Immunogen:**

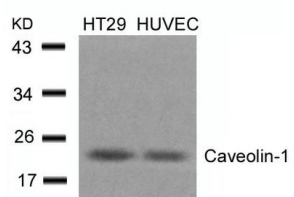
Peptide sequence around aa.12~16 (H-L-Y-T-V) derived from Human CAVEOLIN-1.

**Storage:**

Supplied at 1.0mg/mL in phosphate buffered saline (without Mg<sup>2+</sup> and Ca<sup>2+</sup>), pH 7.4, 150mM NaCl, 0.02% sodium azide and 50% glycerol.

## Product Images

---



Western blot analysis of extracts from HT29 and HUVEC cells using Caveolin-1(Ab-14) Antibody.