

# PRKD1 (Ab-910) Antibody



PACO21381

---

## Product Information

**Size:**

100ul

**Reactivity:**

Human, Mouse, Rat

**Source:**

Rabbit

**Isotype:****Protein Background:****Gene ID:**

PRKD1

**Uniprot**

Q15139

**Synonyms:**

nPKC $\mu$ ; D1; Protein kinase D; Protein kinase C mu type; nPKC $\mu$ ; mu;

**Applications:**

ELISA, WB

**Recommended dilutions:**

ELISA:1:2000-1:10000, WB:1:500-1:1000

**Immunogen:**

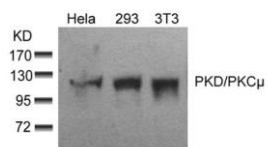
Peptide sequence around aa. 908~912 (R-V-S-I-L) derived from Human PKD/PKC $\mu$ ; .

**Storage:**

Supplied at 1.0mg/mL in phosphate buffered saline (without Mg<sup>2+</sup> and Ca<sup>2+</sup>), pH 7.4, 150mM NaCl, 0.02% sodium azide and 50% glycerol.

## Product Images

---



Western blot analysis of extracts from HeLa, 293 and 3T3 cells using PKD/PKC $\mu$ (Ab-910) Antibody.