

PLCG1 (Ab-783) Antibody



PACO21382

Product Information

Size:

100ul

Reactivity:

Human, Mouse, Rat

Source:

Rabbit

Isotype:

IgG

Applications:

ELISA, WB

Recommended dilutions:

ELISA:1:2000-1:10000, WB:1:500-1:1000

Protein Background:

PLC-gamma is a major substrate for heparin-binding growth factor 1 (acid, c fibroblast growth factor)-activated tyrosine kinase. Ver.

Gene ID:

PLCG1

Uniprot

P19174

Synonyms:

Phosphoinositide phospholipase C; Phospholipase C-gamma-1;

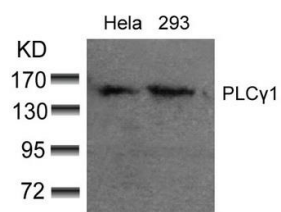
Immunogen:

Peptide sequence around aa. 781~785 (G-F-Y-V-E) derived from Human PLCg1.

Storage:

Supplied at 1.0mg/mL in phosphate buffered saline (without Mg²⁺ and Ca²⁺), pH 7.4, 150mM NaCl, 0.02% sodium azide and 50% glycerol.

Product Images



Western blot analysis of extracts from HeLa and 293 cells using PLCγ1(Ab-783) Antibody.