

PRKDC (Ab-2609) Antibody



PACO21390

Product Information

Size:

100ul

Reactivity:

Human

Source:

Rabbit

Isotype:

IgG

Applications:

ELISA, WB

Recommended dilutions:

ELISA:1:2000-1:10000, WB:1:500-1:1000

Protein Background:

The PRKDC gene encodes the catalytic subunit of a nuclear DNA-dependent serine/threonine protein kinase (DNA-PK). The second component is the autoimmune antigen Ku (MIM 152690), which is encoded by the G22P1 gene on chromosome 22q. On its own, the catalytic subunit of DNA-PK is inactive and relies on the G22P1 component to direct it to the DNA and trigger its kinase activity; PRKDC must be bound to DNA to express its catalytic properties Ding Q, et al. (2003) Mol Cell Biol. Aug; 23(16): 5836-5848.

Gene ID:

PRKDC

Uniprot

P78527

Synonyms:

DNPK1; PRKD; PRKDC; XRCC7; P460

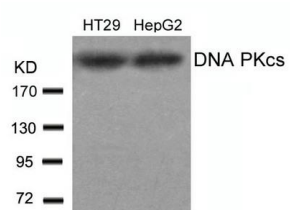
Immunogen:

Peptide sequence around aa.2607~2611 (V-E-T-Q-A) derived from Human DNA-PK.

Storage:

Supplied at 1.0mg/mL in phosphate buffered saline (without Mg²⁺ and Ca²⁺), pH 7.4, 150mM NaCl, 0.02% sodium azide and 50% glycerol.

Product Images



Western blot analysis of extracts from HT29 and HepG2 cells using DNA PKcs(Ab-2609) antibody.