

EGFR (Ab-693) Antibody



PACO21392

Product Information

Size:

100ul

Reactivity:

Human, Mouse, Rat

Source:

Rabbit

Isotype:

IgG

Applications:

ELISA, WB

Recommended dilutions:

ELISA:1:2000-1:10000, WB:1:500-1:1000

Protein Background:**Gene ID:**

EGFR

Uniprot

P00533

Synonyms:

Receptor tyrosine-protein kinase ErbB-1; ERBB1;

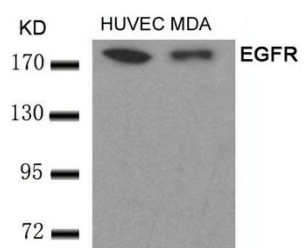
Immunogen:

Peptide sequence around aa.691~695 (P-L-T-P-S) derived from Human EGFR.

Storage:

Supplied at 1.0mg/mL in phosphate buffered saline (without Mg²⁺ and Ca²⁺), pH 7.4, 150mM NaCl, 0.02% sodium azide and 50% glycerol.

Product Images



Western blot analysis of extracts from HUVEC and MDA cells using EGFR(Ab-693) Antibody.