

MAPT (Ab-212) Antibody



PACO21405

Product Information

Size:

100ul

Reactivity:

Human, Mouse, Rat

Source:

Rabbit

Isotype:

IgG

Applications:

ELISA, WB

Recommended dilutions:

ELISA:1:2000-1:10000, WB:1:500-1:1000

Protein Background:**Gene ID:**

MAPT

Uniprot

P10636

Synonyms:

MAPT; MTAPT; MTBT1; Neurofibrillary tangle protein; PHF-tau

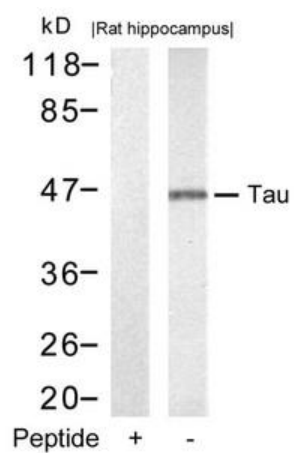
Immunogen:

Peptide sequence around aa.210~214 (S-R-T-P-S) derived from Human Tau.

Storage:

Supplied at 1.0mg/mL in phosphate buffered saline (without Mg²⁺ and Ca²⁺), pH 7.4, 150mM NaCl, 0.02% sodium azide and 50% glycerol.

Product Images



Western blot analysis of extracts from rat hippocampus tissue using Tau(Ab-212) Antibody and the same antibody preincubated with blocking peptide.