

GRIA1 (Ab-849) Antibody



PACO21407

Product Information

Size:

100ul

Reactivity:

Human, Mouse, Rat

Source:

Rabbit

Isotype:**Protein Background:****Gene ID:**

GRIA1

Uniprot

P42261

Synonyms:

GLR1; GLUH1; GRIA1; GluR-1; GluR-A

Applications:

ELISA, WB

Immunogen:

Peptide sequence around aa.847~851 (Q-Q-S-I-N) derived from Human GluR1.

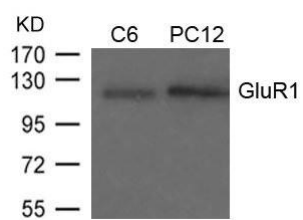
Recommended dilutions:

ELISA:1:2000-1:10000, WB:1:500-1:1000

Storage:

Supplied at 1.0mg/mL in phosphate buffered saline (without Mg²⁺ and Ca²⁺), pH 7.4, 150mM NaCl, 0.02% sodium azide and 50% glycerol.

Product Images



Western blot analysis of extracts from C6 and PC12 cells using GluR1(Ab-849) Antibody.