

ITGB3 (Ab-785) Antibody



PACO21412

Product Information

Size:

100ul

Reactivity:

Human, Mouse

Source:

Rabbit

Isotype:

IgG

Applications:

ELISA, WB

Recommended dilutions:

ELISA:1:2000-1:10000, WB:1:500-1:1000

Protein Background:**Gene ID:**

ITGB3

Uniprot

P05106

Synonyms:

CD61 antigen; GP3A; GPIIIa; ITB3; Platelet membrane glycoprotein IIIa

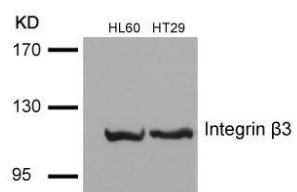
Immunogen:

Peptide sequence around aa.783~787 (I-T-Y-R-G) derived from Human Integrin B3/ITGB3.

Storage:

Supplied at 1.0mg/mL in phosphate buffered saline (without Mg²⁺ and Ca²⁺), pH 7.4, 150mM NaCl, 0.02% sodium azide and 50% glycerol.

Product Images



Western blot analysis of extracts from HL60 and HT29 cells using Integrin β 3(Ab-785) Antibody.