

ERBB3 (Ab-1289) Antibody



PACO21429

Product Information

Size:

100ul

Reactivity:

Human

Source:

Rabbit

Isotype:

IgG

Applications:

ELISA, IF

Recommended dilutions:

ELISA:1:2000-1:10000, IF:1:100-1:200

Protein Background:

Binds and is activated by neuregulins and NTAK.

Gene ID:

ERBB3

Uniprot

P21860

Synonyms:

Tyrosine kinase-type cell surface receptor HER3

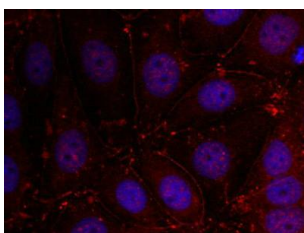
Immunogen:

Peptide sequence around aa.1287~1291 (Q-G-Y-E-E) derived from Human Her3/ErbB3.

Storage:

Supplied at 1.0mg/mL in phosphate buffered saline (without Mg²⁺ and Ca²⁺), pH 7.4, 150mM NaCl, 0.02% sodium azide and 50% glycerol.

Product Images



Immunofluorescence staining of methanol-fixed MCF cells using Her3/ErbB3(Ab-1289) Antibody.