

# JAK2 (Ab-570) Antibody



PACO21432

---

## Product Information

**Size:**

100ul

**Reactivity:**

Human, Rat

**Source:**

Rabbit

**Isotype:**

IgG

**Applications:**

ELISA, IHC

**Recommended dilutions:**

ELISA:1:2000-1:10000, IHC:1:50-1:100

**Protein Background:**

Plays a role in leptin signaling and control of body weight.

**Gene ID:**

JAK2

**Uniprot**

O60674

**Synonyms:**

JAK-2; Janus kinase 2; kinase Jak2

**Immunogen:**

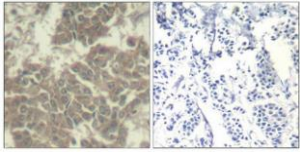
Peptide sequence around aa.568~572 (G-D-Y-G-Q) derived from Human JAK2.

**Storage:**

Supplied at 1.0mg/mL in phosphate buffered saline (without Mg<sup>2+</sup> and Ca<sup>2+</sup>), pH 7.4, 150mM NaCl, 0.02% sodium azide and 50% glycerol.

## Product Images

---



Immunohistochemical analysis of paraffin-embedded human breast carcinoma tissue using Jak2(Ab-570) Antibody(left) or the same antibody preincubated with blocking peptide(right).