

BCL2L1 (Ab-62) Antibody



PACO21435

Product Information

Size:

100ul

Reactivity:

Human, Mouse, Rat

Source:

Rabbit

Isotype:

IgG

Applications:

ELISA, WB

Recommended dilutions:

ELISA:1:2000-1:10000, WB:1:500-1:1000

Protein Background:

Potent inhibitor of cell death. Isoform Bcl-X(L) anti-apoptotic activity is inhibited by association with SIVA isoform 1. Inhibits activation of caspases By similarity. Appears to regulate cell death by blocking the voltage-dependent anion channel (VDAC) by binding to it and preventing the release of the caspase activator, cytochrome c, from the mitochondrial membrane. The Bcl-X(S) isoform promotes apoptosis. Cheng E. HY. et. al. (1996) Nature 379:554-556. Muchmore S. W. et. al (1996). Nature 381:335-341.

Gene ID:

BCL2L1

Uniprot

Q07817

Synonyms:

Apoptosis regulator Bcl-X

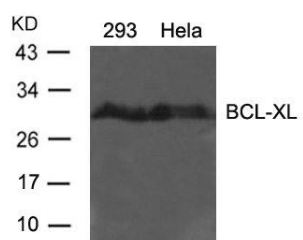
Immunogen:

Peptide sequence around aa.60~64 (A-D-S-P-A) derived from human BCL-XL.

Storage:

Supplied at 1.0mg/mL in phosphate buffered saline (without Mg²⁺ and Ca²⁺), pH 7.4, 150mM NaCl, 0.02% sodium azide and 50% glycerol.

Product Images



Western blot analysis of extracts from 293 and HeLa cells using BCL-XL(Ab-62) antibody.