

ABL1/ABL2 (Ab-393/439) Antibody



PACO21441

Product Information

Size:

100ul

Reactivity:

Human, Mouse

Source:

Rabbit

Isotype:

IgG

Applications:

ELISA, WB

Recommended dilutions:

ELISA:1:2000-1:10000, WB:1:500-1:1000

Protein Background:**Gene ID:**

ABL1/ABL2

Uniprot

P00519/P42684

Synonyms:

ABL; v-abl; c-ABL; p150; JTK7

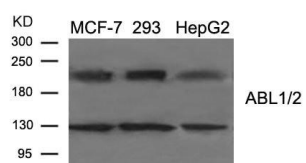
Immunogen:

Peptide sequence around aa.391~395/437~441(D-T-Y-T-A) derived from Human ABL1/2.

Storage:

Supplied at 1.0mg/mL in phosphate buffered saline (without Mg²⁺ and Ca²⁺), pH 7.4, 150mM NaCl, 0.02% sodium azide and 50% glycerol.

Product Images



Western blot analysis of extract from MCF-7, 293, HepG2 cells using ABL1/2 (Ab-393/439) Antibody.