

MDM2 Antibody



PACO21456

Product Information

Size:

100ul

Reactivity:

Human

Source:

Rabbit

Isotype:

Protein Background:

Gene ID:

MDM2

Uniprot

Q00987

Synonyms:

HDMX; hdm2;

Applications:

ELISA, WB

Immunogen:

Peptide sequence around aa.18~22(Q-I-P-A-S) derived from Human MDM2.

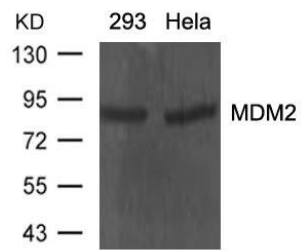
Recommended dilutions:

ELISA:1:2000-1:10000, WB:1:500-1:1000

Storage:

Supplied at 1.0mg/mL in phosphate buffered saline (without Mg²⁺ and Ca²⁺), pH 7.4, 150mM NaCl, 0.02% sodium azide and 50% glycerol.

Product Images



Western blot analysis of extracts from 293 and HeLa cells using MDM2 Antibody.