

# Gripap1 Antibody



PACO21462

---

## Product Information

**Size:**

100ul

**Reactivity:**

Human, Mouse, Rat

**Source:**

Rabbit

**Isotype:****Protein Background:****Gene ID:**

Gripap1

**Uniprot**

Q9JHZ4

**Synonyms:**

Gripap; Grasp; GRIP1-associated protein

**Applications:**

ELISA, WB

**Immunogen:**

Peptide sequence around aa. 814-818(Q-E-I-V-R ) derived from Rat GRASP.

**Recommended dilutions:**

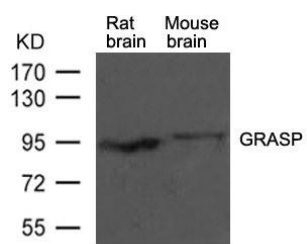
ELISA:1:2000-1:10000, WB:1:500-1:1000

**Storage:**

Supplied at 1.0mg/mL in phosphate buffered saline (without Mg<sup>2+</sup> and Ca<sup>2+</sup>), pH 7.4, 150mM NaCl, 0.02% sodium azide and 50% glycerol.

## Product Images

---



Western blot analysis of extracts from rat brain and mouse brain tissue using GRASP Antibody.