

PACO21463

Product Information

Size:

100ul

Reactivity:

Human, Mouse, Rat

Source:

Rabbit

Isotype:**Protein Background:****Gene ID:**

Mapt

Uniprot

P19332

Synonyms:

MAPT; MTAPT; MTBT1; Neurofibrillary tangle protein; PHF-tau

Applications:

ELISA, WB

Immunogen:

Peptide sequence around aa. 725-729(T-G-S-I-D) derived from Rat Tau.

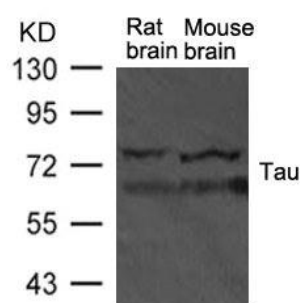
Recommended dilutions:

ELISA:1:2000-1:10000, WB:1:500-1:1000

Storage:

Supplied at 1.0mg/mL in phosphate buffered saline (without Mg²⁺ and Ca²⁺), pH 7.4, 150mM NaCl, 0.02% sodium azide and 50% glycerol.

Product Images



Western blot analysis of extract from rat brain and mouse brain tissue using TAU Antibody.