

Raf1 Antibody



PACO21464

Product Information

Size:

100ul

Reactivity:

Rat

Source:

Rabbit

Isotype:

IgG

Applications:

ELISA, WB

Recommended dilutions:

ELISA:1:2000-1:10000, WB:1:500-1:1000

Protein Background:**Gene ID:**

Raf1

Uniprot

P11345

Synonyms:

c-RAF; RAF proto-oncogene serine/threonine-protein kinase;

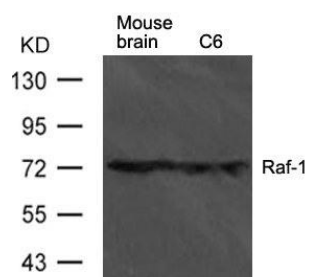
Immunogen:

Peptide sequence around aa. 641-645(T-S-P-R-L) derived from Rat Raf-1.

Storage:

Supplied at 1.0mg/mL in phosphate buffered saline (without Mg²⁺ and Ca²⁺), pH 7.4, 150mM NaCl, 0.02% sodium azide and 50% glycerol.

Product Images



Western blot analysis of extract from mouse brain tissue and C6 cells using Raf-1 Antibody.