

MME Antibody



PACO21472

Product Information

Size:

100ul

Reactivity:

Human, Mouse, Rat

Source:

Rabbit

Isotype:**Protein Background:****Gene ID:**

MME

Uniprot

P08473

Synonyms:

NEP; MME; SFE; CALLA; MGC126681

Applications:

ELISA, WB

Immunogen:

Peptide sequence around aa.6~10(S-Q-M-D-I) derived from Human CD10.

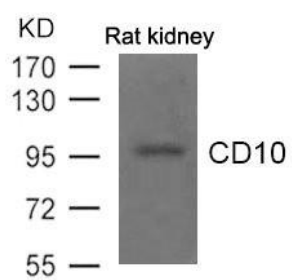
Recommended dilutions:

ELISA:1:2000-1:10000, WB:1:500-1:1000

Storage:

Supplied at 1.0mg/mL in phosphate buffered saline (without Mg²⁺ and Ca²⁺), pH 7.4, 150mM NaCl, 0.02% sodium azide and 50% glycerol.

Product Images



Western blot analysis of extract from Rat kidney tissue using CD10 Antibody.