

PACO21483

---

## Product Information

**Size:**

100ul

**Reactivity:**

Human, Mouse, Rat

**Source:**

Rabbit

**Isotype:**

IgG

**Applications:**

ELISA, WB

**Recommended dilutions:**

ELISA:1:2000-1:10000, WB:1:500-1:1000

**Protein Background:**

Transcriptional regulator. May participate in transcriptional regulation through the recruitment of SETDB1 histone methyltransferase and subsequent modification of local chromatin structure. Joeson L , Vikesaa J , Krogh A , Nielsen L. K , Hansen T , Borup R , Johnsen A. H , Christiansen J , Nielsen F. C. Mol. Cell. Proteomics 6:798-811(2007).

**Gene ID:**

ERG

**Uniprot**

P11308

**Synonyms:**

p55; erg-3;

**Immunogen:**

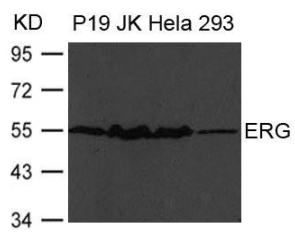
Peptide sequence around aa.84~88(G-S-R-N-S) derived from Human ERG.

**Storage:**

Supplied at 1.0mg/mL in phosphate buffered saline (without Mg<sup>2+</sup> and Ca<sup>2+</sup>), pH 7.4, 150mM NaCl, 0.02% sodium azide and 50% glycerol.

## Product Images

---



Western blot analysis of extract from P19, JK, HeLa and 293 cells using ERG Antibody.